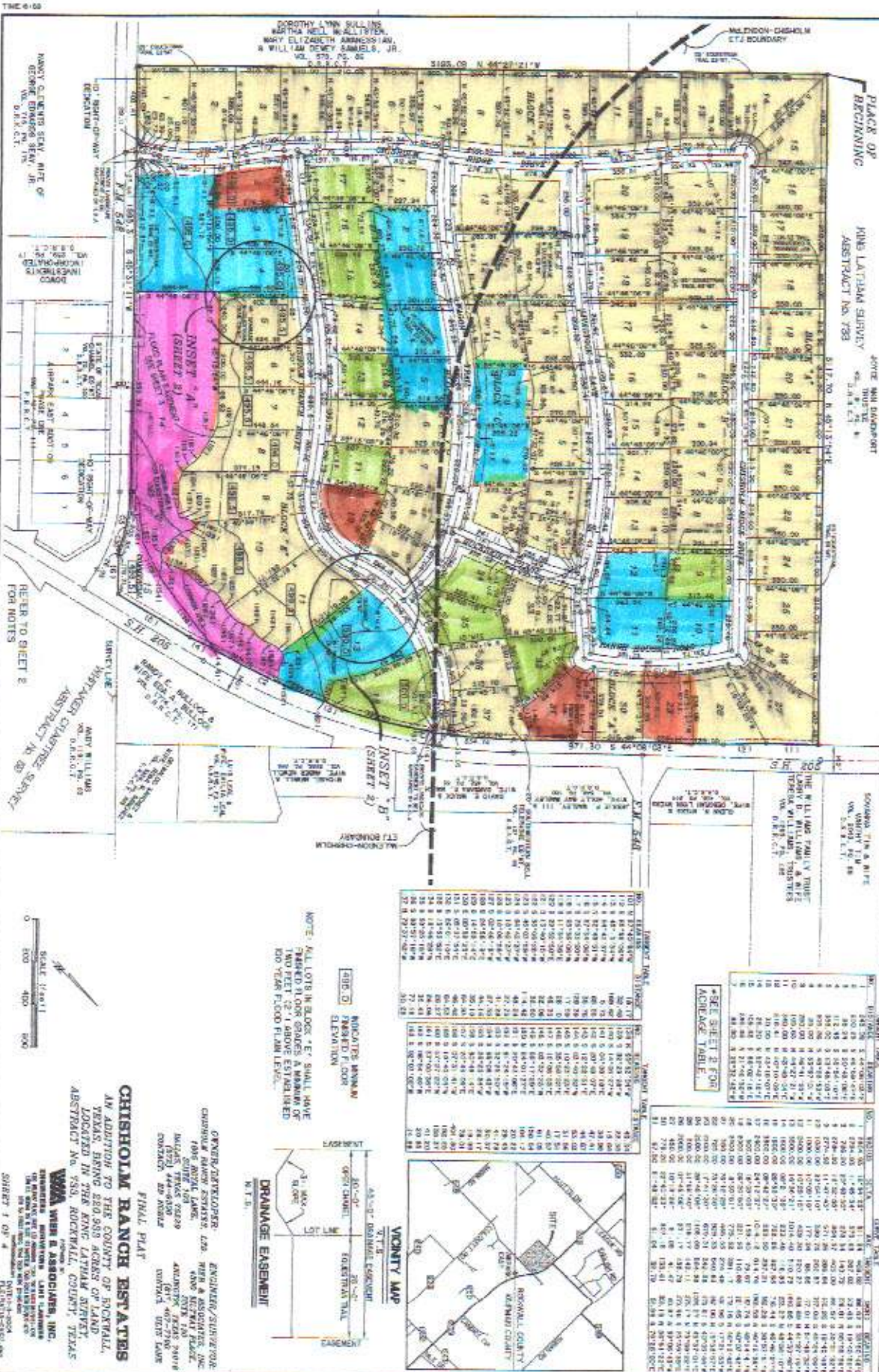


RECEIVED
FEB 03 2011

Quint
Dr. Hoke
13
Dr. Conroy
10
Dr. Hoke
Dr. Conroy

Christy Hoke
Christy Hoke



LOT	AREA (SQ. FT.)	APPROX. ELEVATION
1	1,234.56	1,200
2	1,234.56	1,200
3	1,234.56	1,200
4	1,234.56	1,200
5	1,234.56	1,200
6	1,234.56	1,200
7	1,234.56	1,200
8	1,234.56	1,200
9	1,234.56	1,200
10	1,234.56	1,200
11	1,234.56	1,200
12	1,234.56	1,200
13	1,234.56	1,200
14	1,234.56	1,200
15	1,234.56	1,200
16	1,234.56	1,200
17	1,234.56	1,200
18	1,234.56	1,200
19	1,234.56	1,200
20	1,234.56	1,200
21	1,234.56	1,200
22	1,234.56	1,200
23	1,234.56	1,200
24	1,234.56	1,200
25	1,234.56	1,200
26	1,234.56	1,200
27	1,234.56	1,200
28	1,234.56	1,200
29	1,234.56	1,200
30	1,234.56	1,200
31	1,234.56	1,200
32	1,234.56	1,200
33	1,234.56	1,200
34	1,234.56	1,200
35	1,234.56	1,200
36	1,234.56	1,200
37	1,234.56	1,200
38	1,234.56	1,200
39	1,234.56	1,200
40	1,234.56	1,200
41	1,234.56	1,200
42	1,234.56	1,200
43	1,234.56	1,200
44	1,234.56	1,200
45	1,234.56	1,200
46	1,234.56	1,200
47	1,234.56	1,200
48	1,234.56	1,200
49	1,234.56	1,200
50	1,234.56	1,200

NOTE: ALL LOTS IN BLOCK 'E', SMALL LOTS, CHANGED FLOOR GRADES, A MINIMUM OF TWO FEET (2') ABOVE ESTABLISHED 100 YEAR FLOOD PLAIN LEVEL.



NAVY CLERKS CONV. TRACT OF 63 ACRES, 1/2 ACRES IN THE DISTRICT.

REFER TO SHEET 2 FOR NOTES



CHISHOLM RANCH ESTATES
AN ADDITION TO THE COUNTY OF ROCKWALL, TEXAS, BEING 220.923 ACRES OF LAND, LOCATED IN THE KING LATHAM SURVEY, ABSTRACT NO. 753, ROCKWALL COUNTY, TEXAS.

WMA WBS & ASSOCIATES, INC.

OWNER/DEVELOPER: ENGINEER/SURVEYOR
CHISHOLM RANCH ESTATES, L28, WBS & ASSOCIATES, INC.
1005 ANNE LANE, SUITE 100, ROCKWALL, TEXAS 75087
PHONE: (972) 444-6100 FAX: (972) 444-6100
CONTACT: DR. HAKE

FINAL PLAT